



GAT MONTHLY MEMBERSHIP PROGRESS REPORT

Results as of: 4/30/2021

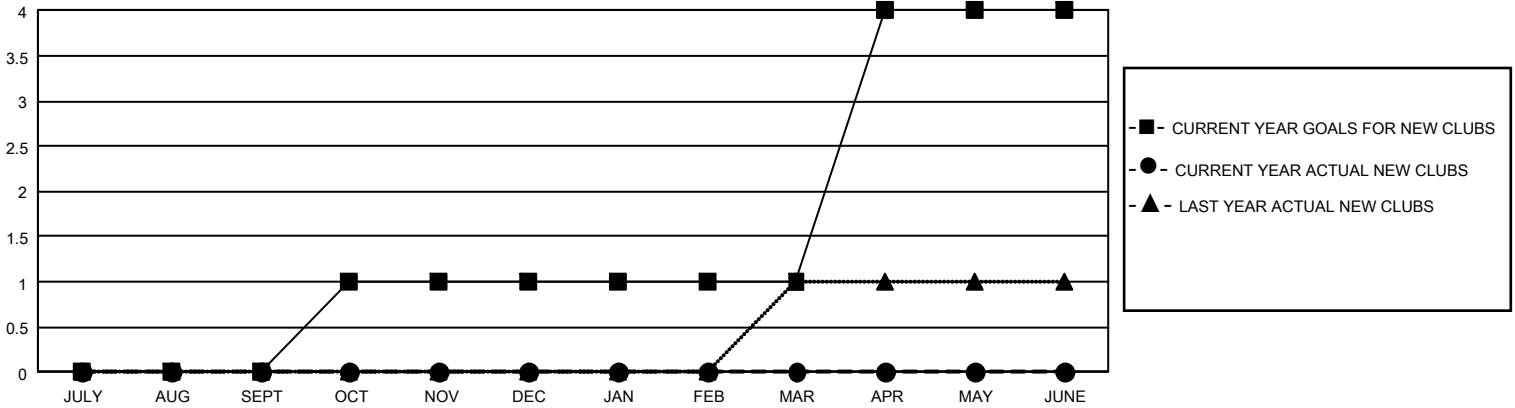
GMT Constitutional Area 8, Group C

REPORT DOES NOT INCLUDE CLUBS IN UNDISTRICTED AREAS.

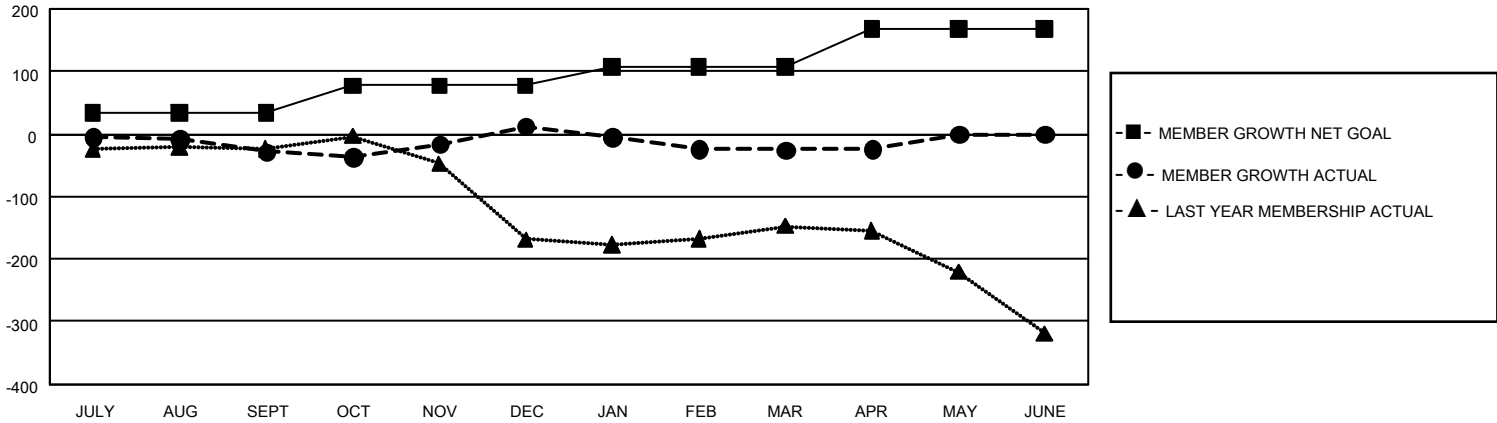
| Clubs | | | |
|-----------------------|---------------|-----------|---------------|
| RESULTS FOR 2020-2021 | | | |
| QUARTER | NEW CLUB GOAL | NEW CLUBS | DROPPED CLUBS |
| JULY/AUG/SEPT | 0 | 0 | 0 |
| OCT/NOV/DEC | 3 | 0 | 1 |
| JAN/FEB/MAR | 0 | 0 | 3 |
| APR/MAY/JUNE | 9 | 0 | 1 |

| Members | | | |
|-----------------------|------------------------|----------------------|--|
| RESULTS FOR 2020-2021 | | | |
| QUARTER | MEMBER GROWTH NET GOAL | MEMBER GROWTH ACTUAL | DROPPED MEMBERS ACTUAL (including transfers) |
| JULY/AUG/SEPT | 34 | 56 | 65 |
| OCT/NOV/DEC | 43 | 162 | 114 |
| JAN/FEB/MAR | 31 | 43 | 73 |
| APR/MAY/JUNE | 60 | 31 | 27 |

GOALS AND ACTUAL NEW CLUBS CUMULATIVE



GOALS AND ACTUAL MEMBERS CUMULATIVE



| | | | |
|------------------------|---|-------------------------------------|----------------|
| DROPPED CLUBS: 5 | 70 CLUBS OF 132 ADDED 1 OR MORE NEW MEMBERS | <u>GENDER DISTRIBUTION</u> | |
| <u>DROPPED MEMBERS</u> | | MALE | 1,108 (54.39%) |
| DECEASED | 35 | FEMALE | 929 (45.61%) |
| CLUB CANCELLED | 31 | TOTAL FAMILY UNIT MEMBERS 543 | |
| OTHER | 213 | FAMILY MEMBERS PAYING HALF DUES 282 | |
| TOTAL | 279 | | |

[CLICK HERE FOR CUMULATIVE MEMBERSHIP DATA](#)